

Strengths-Based Practice: A Community Speaks

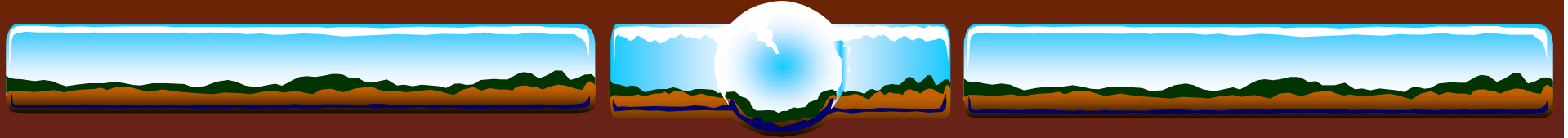
*Governor's 9th Annual Conference
On Child Abuse and Neglect*

Esta M. Glazer-Semmel, LCSW-C

Family Connections Program

Center for Families

University of Maryland School of Social Work



Who are we?

How are we going to spend our time?

- ❖ Introductions and interests
- ❖ Program description and rationale for work
- ❖ Focus-group method & procedures
- ❖ Strengths-based practice
- ❖ Results & discussion
- ❖ Other?





Family Connections



- ❖ Mission: Promoting the safety and well-being of children and families through family and community services, professional education and training, and research and evaluation.

Partially funded by grants from the Children's Bureau and
The Substance Abuse and Mental Health Services Administration



Program Description & Rationale for Work

- ❖ Family Connections
 - ❖ Guiding philosophies
 - ❖ Environment
- ❖ Community consensus building
- ❖ Strengths-based goodness-of-fit





Focus Group – Membership (1)

- ❖ 1) Current & past program staff & students
 - ❖ 10 women
 - ❖ Mean age 40 years (25-51)
 - ❖ Mean work experience 9.4 years (0-28)
 - ❖ 70% Caucasian, 30% African American
 - ❖ 4 BA, 4 MSW, 2 PhD



Focus Groups – Membership (2)

- ❖ 2) Community providers
 - ❖ 6 women, 4 men
 - ❖ Mean age 46 years (30-60)
 - ❖ Mean work experience 11 years (0-26)
 - ❖ 5 Caucasian, 5 African American
 - ❖ 2 HS, 4 MA/MSW, 4 MD/PhD



Focus Groups – Membership (3)

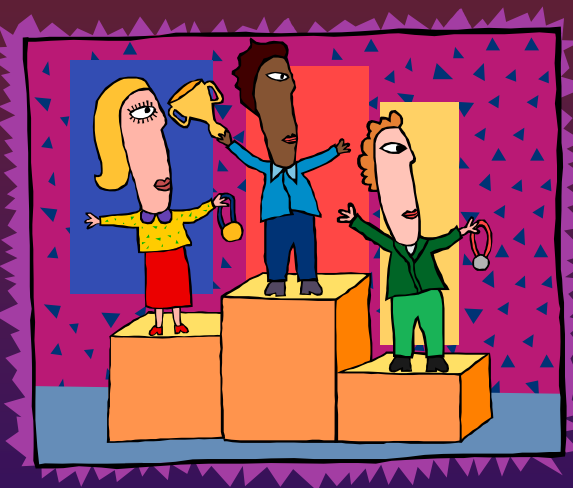
- ❖ Former clients

- ❖ 6 women

- ❖ Mean age 51 years (27-72)

- ❖ 100% African American

- ❖ 2 7-8th grade, 1 9-11th grade, 2 HS/AA



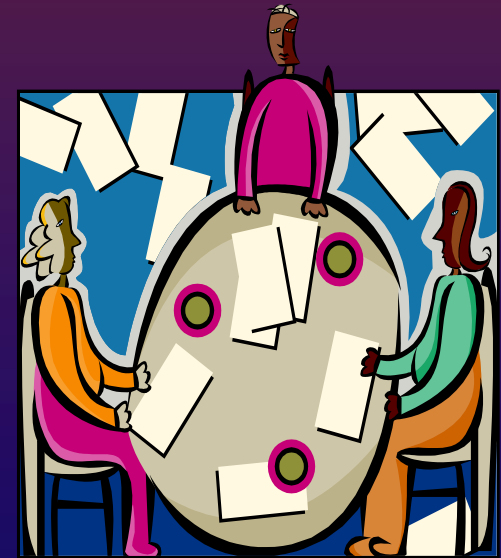
Focus Groups – Membership (4)

- ❖ Community residents
 - ❖ 13 women, 1 man
 - ❖ Mean age 35 years (20-48)
 - ❖ 100% African American
 - ❖ 2 7-8th, 8 9-11th, 2 HS



Procedure

- ❖ Participant, facilitator & site selections
- ❖ Readiness to participate
- ❖ Structure & process of sessions
- ❖ Member rewards





Guiding Questions

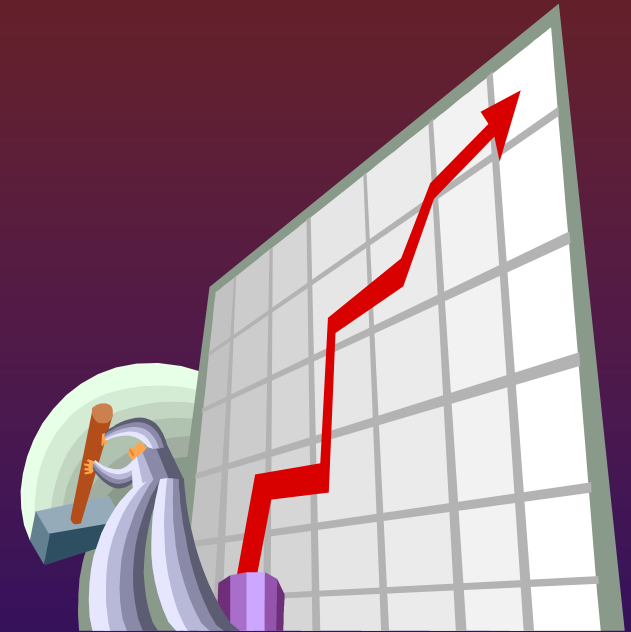


- ❖ What services did families find helpful/not helpful?
- ❖ What made families want to return/not return to work with an agency after introduction?
- ❖ What ways of working together were most/least desirable?



Analysis

- ❖ Facilitator notes
- ❖ Videotapes/transcripts
- ❖ Themes
- ❖ Similarities & differences
- ❖ Consistency with strengths perspective

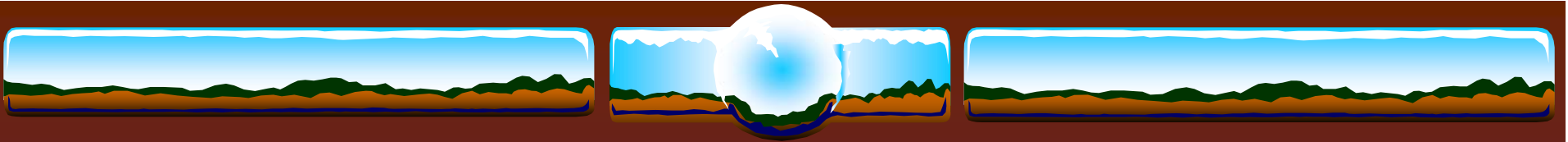




Strengths-Based Practice

- ❖ As a service model
- ❖ With diverse populations
- ❖ As a paradigm shift
- ❖ In assessment
- ❖ During intervention





Strengths Perspective as a Basis for Analysis

- ❖ 1 Focus on strengths, abilities, knowledge & capacities of individuals & families.
- ❖ 2 The relationship between clients & helpers is an essential component of the helping process.
- ❖ 3 The helping process is directed by the client.
- ❖ 4 All humans beings have the capacity to learn, grow & change.
- ❖ 5 Help is designed to be provided in the community, not in the confines of a building.

(Kisthardt, 1997)



Focus on Strengths, Abilities, Knowledge & Capacities

- ❖ Focus on strengths
- ❖ Recognizing success or progress
- ❖ Avoiding communication that conveys blame
- ❖ Desire for respect
- ❖ Acknowledge what is important to the client
- ❖ Emphasis on talents





Relationship Between Clients & Helpers as an Essential Component

- ❖ Process of engagement
- ❖ Building confidence in the relationship
- ❖ Perceived competence of the worker
- ❖ Conveying genuine empathy
- ❖ Relationship has meaning to the client & helper
- ❖ What helps to foster the relationship

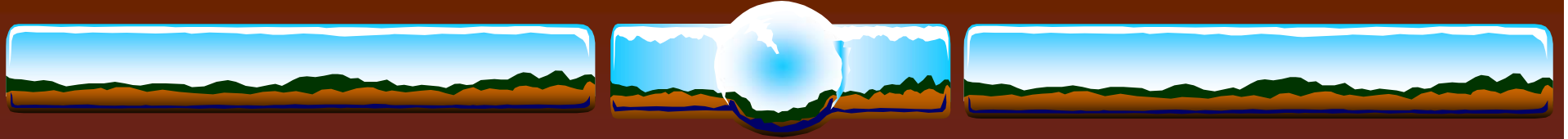




Helping Process Is Directed by the Client

- ❖ Client's right to self-determination
- ❖ Clients defining service outcomes
- ❖ Clients knowing best what they need





All Human Beings have the Capacity to Learn, Grow & Change

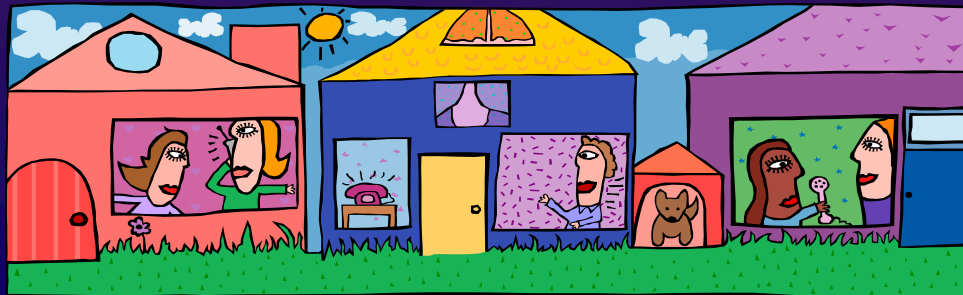
- ❖ Helping families see changes they are making
- ❖ Reinforce achievement of goals & outcomes
- ❖ Hope for a brighter future





Help Is Designed to be Provided in the Community

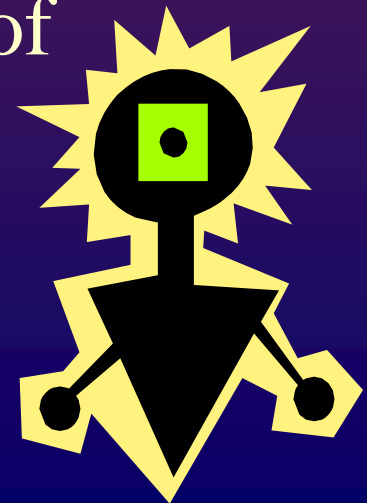
- ❖ Knowing about & using community resources
 - ❖ Families as good consumers
 - ❖ Providers as advocates for services
- ❖ Overcoming fears of homes & neighborhoods





Conclusions

- ❖ Emerging themes helped support key principles of the strengths perspective
- ❖ Utilizing principles of the perspective may increase family engagement in the change process
- ❖ Engagement may improve the likelihood of achieving successful outcomes
- ❖ Study does not provide support for the effectiveness of the perspective



The header consists of three horizontal panels. The left and right panels show a landscape with green hills, brown ground, and a blue sky. The middle panel features a white globe with blue oceans and green continents, positioned over the same landscape background.

Visit Us

[http\\www.family.umaryland.edu](http://www.family.umaryland.edu)