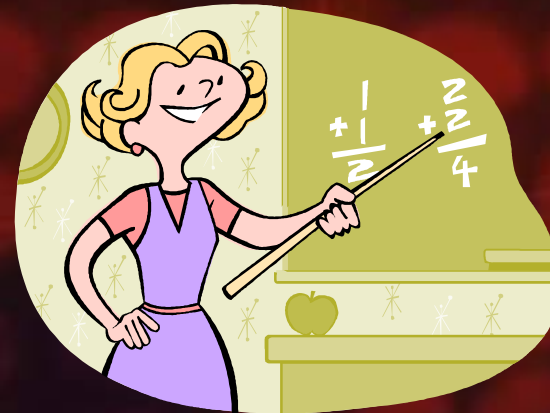


Effects of Victimization

MD Crime Victims Resource Center
18 October, 2005

Some 2003 Statistics

- 78,188 children were sexually abused in the USA
- 2,079 CSA victims in MD (12.5%)



Child Sexual Abuse Accommodation Syndrome (Summit, 1983)



- Secrecy
- Entrapment
- Accommodation
- Delayed, partial disclosure
- Retraction

The First (at least yours with the child!) Chat

- Not what happened, but rather based on what happened how has your life changed?



Figuring Out What This Kid Needs

- Collateral Sources
- Talking with Them
 - Don't only focus on "it" but don't completely avoid "it"
 - Process of building trust
 - Neutral Recall & Rules
 - Tell me more and then what happened prompts
 - Don't know, Correct Me, Ignorant, Don't understand, Don't remember, Don't want to talk....

Effects of Victimization

- Trauma is not a definite
- Trauma does not have a set presentation



Developmental v. Localized

- Deeper and generalized impact
- Long term
- Specific to trauma experience
- Typically short term
- Typically lower inference with development

Effects

- Affective
- Physical
- Cognitive
- Behavioral
- Sexual



Affective Effects



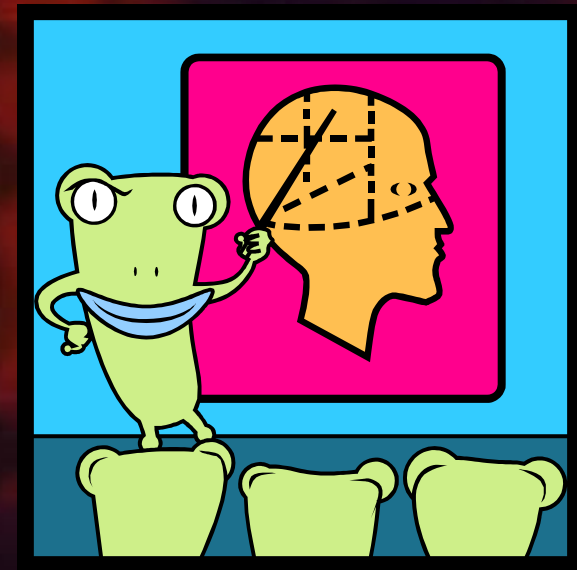
- Guilt/shame
- Fear/anxiety
- Depression/grief
- Low self esteem
- Repressed anger
- Impaired ability to trust or blind trust
- Stunted affect/blocked feelings

Physical Effects

- Genital injury
- Body injury
- Psycho-somatic complaints
- Pregnancy
- Sexually transmitted diseases
- Eating disorders
- Sleeping disorders
- Self-destructive behaviors
- Enuresis
- Encopresis
- Brain wave abnormalities

A Little More Brain Activity

- Major reduction in corpus callosum
 - Increased risk of depression, panic dx, ptsd, dissoc. dx, memory impairments and borderline dx
- Brain in state of fear-related activation
 - Hyper vigilant, increased muscle tone, focus on threat cues, anxiety and impulsivity
- Altered Endocrine system
 - Cortisol (stress hormone) – preoccupied with seeing anger/threat (NPR study)



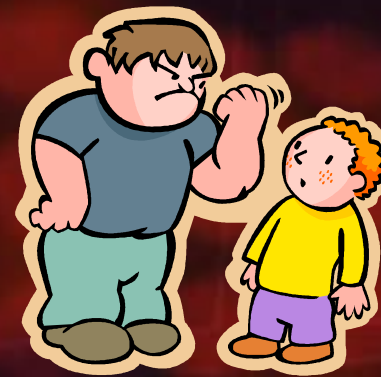
Cognitive Effects (beyond brain!)

- Concentration difficulties
- Short attention span
- Helpless victim mentality
- School problems



Behavioral Effects

- Turtle to Thug
- Substance abuse (fits in many of these categories!)



Effects related to Sexuality

- Traumatic sexualization
- Further victimizations
- Sexually Reactive Child
- Victim to Victimizer
- Sexual identity confusion
- Ego dystonic sexual orientation issues

General Thoughts on Intervention

- Don't rubber stamp it
- It's the resolution of negative outcomes and the prevention of future ones



Some rules

- Directive, but at other times non-directive
- Confront the inappropriate
- Counter the irrational
- Nurture
- Duration?

Some Pointers

- Normalize the child's life
- Acknowledge the drag of involvement
- Protect self from false allegations
- Give child a sense of control



Some more...

- Provide consistent, predictable pattern
- Watch for signs of enactment
- Nurture and comfort
- Protect!!!



So what else should have been
addressed?



Contact Information:

- Melissa McDermott Lane, LCSW-C
UM-B, School of Social Work: Center for
Families
410-706-0061
mmlane@ssw.umaryland.edu